

Charleston Collection

CH - 31
hanging

ELECTRIC OPTIONS

- ☒ Medium Base Socket
- ☒ Frosted Chimney
- ☐ Single Brass Candle
- ☐ Single Brass Tall Candle
- ☒ 2 Light Brass Cluster
- ☒ 2 Light Tall Brass Cluster
- ☒ 3 Light Brass Cluster
- ☒ 4 Light Brass Cluster
- ☒ Drip Candle Covers



GAS OPTIONS

- ☐ Single Brass Burner
- ☐ Double Brass Burner
- ☐ Triple Brass Burner
- ☐ Extra Tall Burner
- ☐ LP Brass Burner
- ☐ Palmetto Flame Brass Burner
- ☐ Bat Flame Brass Burner
- ☐ Hidden Gas Line



GLASS OPTIONS

- ☒ Tempered Clear
- ☒ Seeded
- ☒ Antique

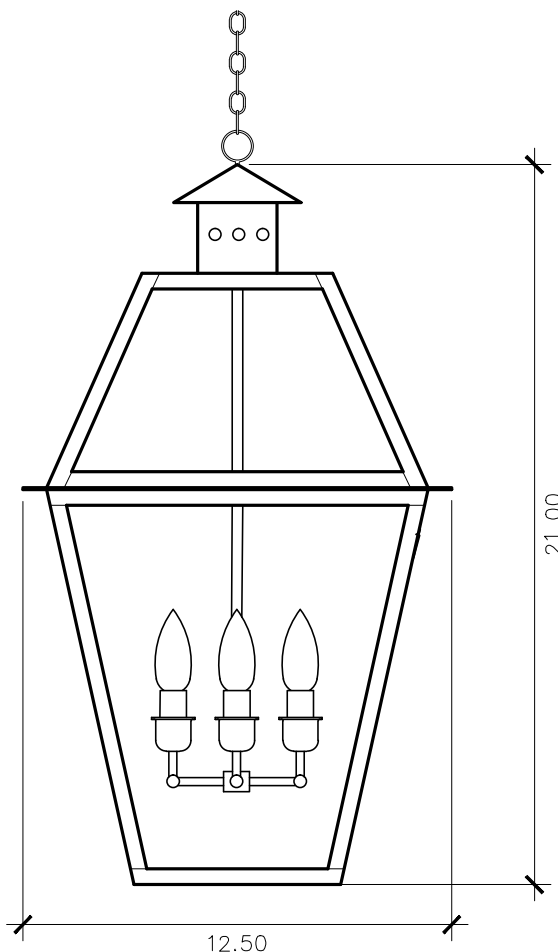
ACCESSORIES

- ☒ Solid Copper Top
- ☒ Copper Panels
- ☐ Top Copper Ring
- ☒ Brass Cross Bars
- ☒ Copper Cross Bars
- ☐ Top Loop
- ☐ Full Scroll
- ☐ Backward Scroll
- ☐ Side Scrolls
- ☐ Down Scrolls
- ☐ Top Loop Hanger
- ☐ Wall Bracket WBC
- ☐ Wall Yoke
- ☐ Extender Bracket
- ☐ Top Mount
- ☐ Top Hole Backplate
- ☐ Pier Mount
- ☐ Pier Mount Cover

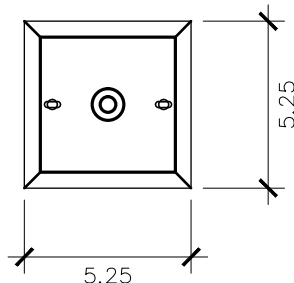
FINISHES

- ☒ Solid Copper
- ☒ Aged Bronze
- ☒ Powder Coated Black
- ☒ Silver

21h x 12.5w x 12.5d



CEILING MOUNTING PLATE



STANDARD FEATURES

Solid Copper
Tempered Clear Glass
Electric: 3 Light Brass Cluster
Gas: Not Available On This Model
Includes 18" of Chain

** Shown with Standard 3 Light Brass Cluster*

Lantern & Scroll
a brilliant first impression

2041 South Blvd. Suite C, Charlotte, NC 28203 - 704.333.5088 - buyfrom@lanternandscroll.com